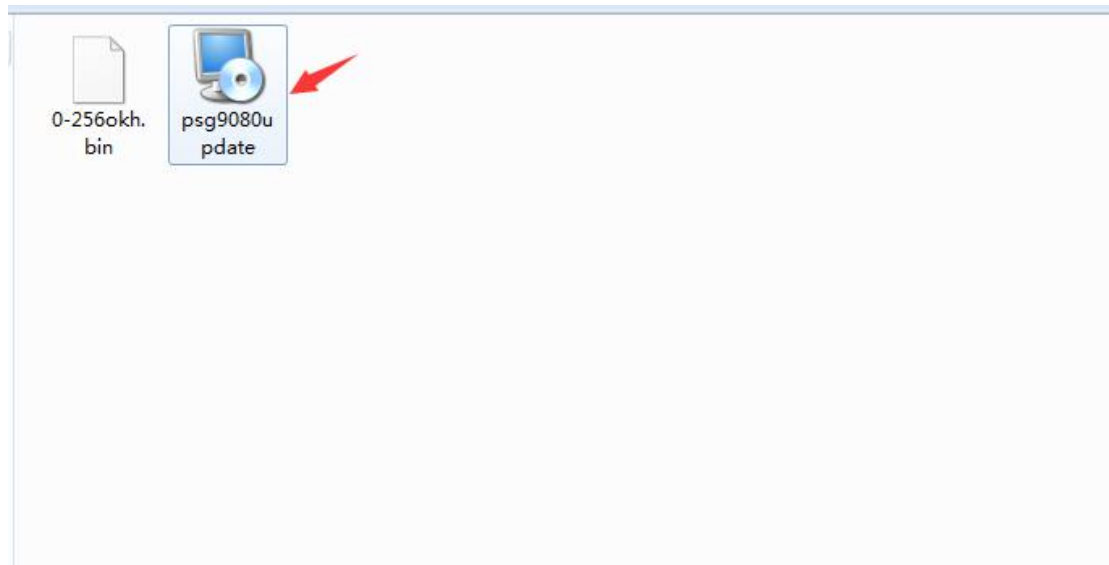
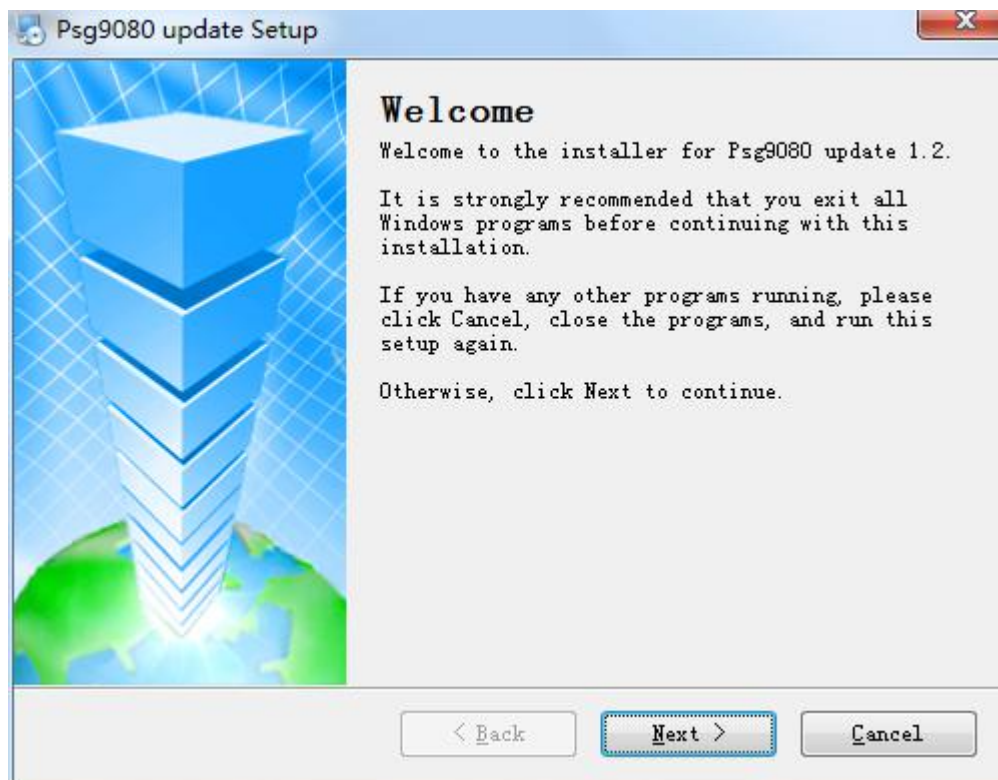


1、 First prepare a computer with windows7 system or higher, connect the computer and PSG9080 with a USB cable, and power on and turn on the PSG9080;

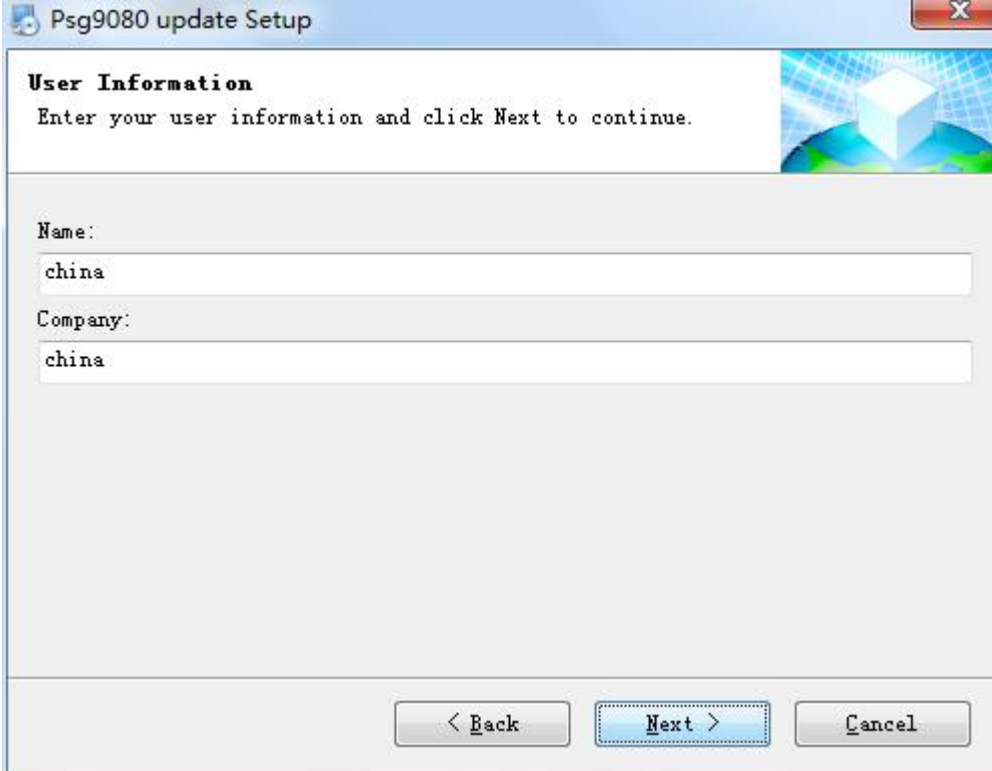
2、 Open the upgrade package;



3、 Click Next;



4、Click Next;



The screenshot shows the 'User Information' screen of the 'Psg9080 update Setup' window. The window has a title bar with the text 'Psg9080 update Setup' and a close button. The main area is titled 'User Information' and contains the instruction 'Enter your user information and click Next to continue.' Below this, there are two text input fields: 'Name:' with the value 'china' and 'Company:' with the value 'china'. At the bottom, there are three buttons: '< Back', 'Next >' (which is highlighted with a blue border), and 'Cancel'. A decorative graphic of a cube on a globe is visible in the top right corner.

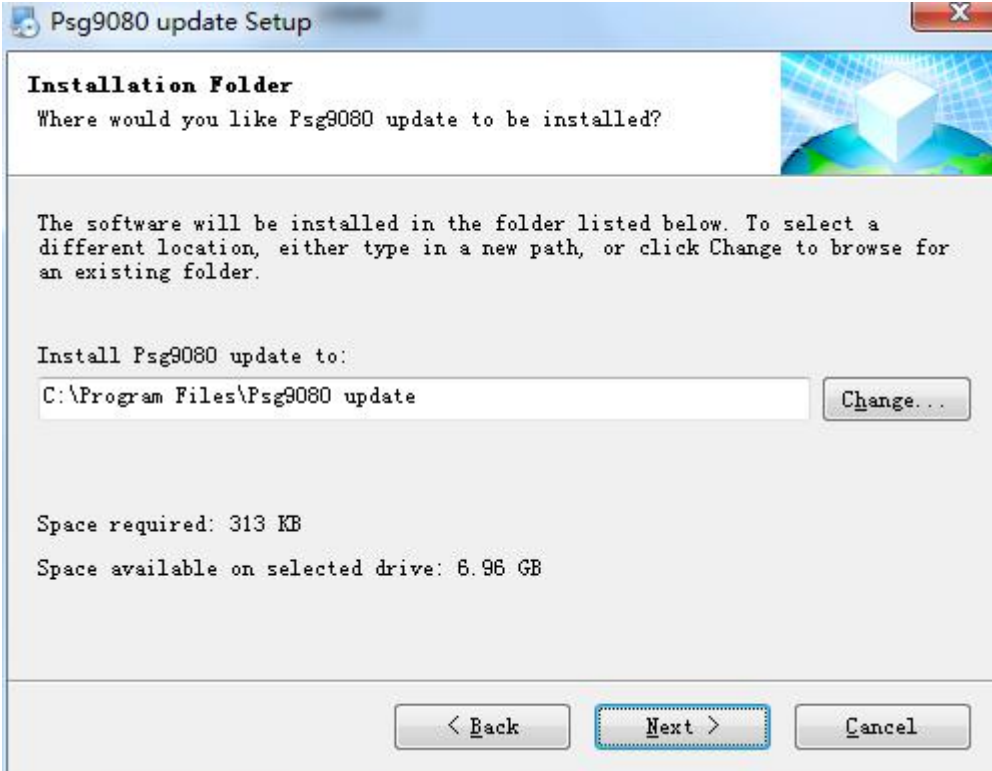
**User Information**  
Enter your user information and click Next to continue.

Name:  
china

Company:  
china

< Back    Next >    Cancel

5、Click Next;



The screenshot shows the 'Installation Folder' screen of the 'Psg9080 update Setup' window. The window has a title bar with the text 'Psg9080 update Setup' and a close button. The main area is titled 'Installation Folder' and contains the question 'Where would you like Psg9080 update to be installed?'. Below this, there is a paragraph of text: 'The software will be installed in the folder listed below. To select a different location, either type in a new path, or click Change to browse for an existing folder.' This is followed by the text 'Install Psg9080 update to:' and a text input field containing 'C:\Program Files\Psg9080 update'. To the right of the input field is a 'Change...' button. Below the input field, there are two lines of text: 'Space required: 313 KB' and 'Space available on selected drive: 6.96 GB'. At the bottom, there are three buttons: '< Back', 'Next >' (which is highlighted with a blue border), and 'Cancel'. A decorative graphic of a cube on a globe is visible in the top right corner.

**Installation Folder**  
Where would you like Psg9080 update to be installed?

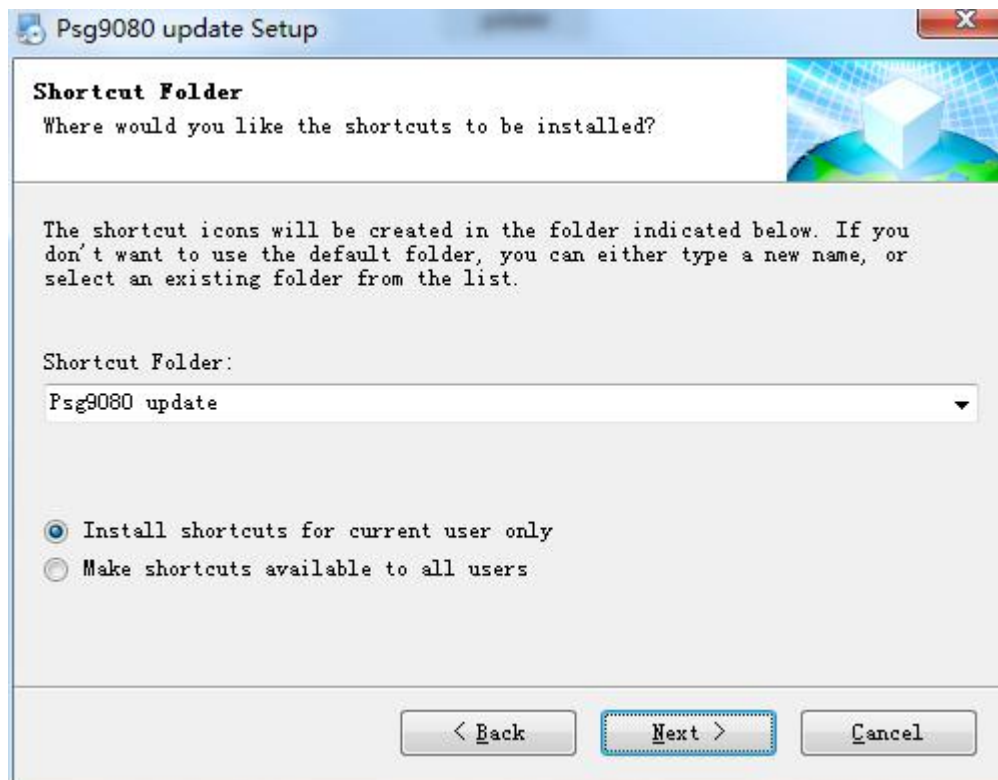
The software will be installed in the folder listed below. To select a different location, either type in a new path, or click Change to browse for an existing folder.

Install Psg9080 update to:  
C:\Program Files\Psg9080 update    Change...

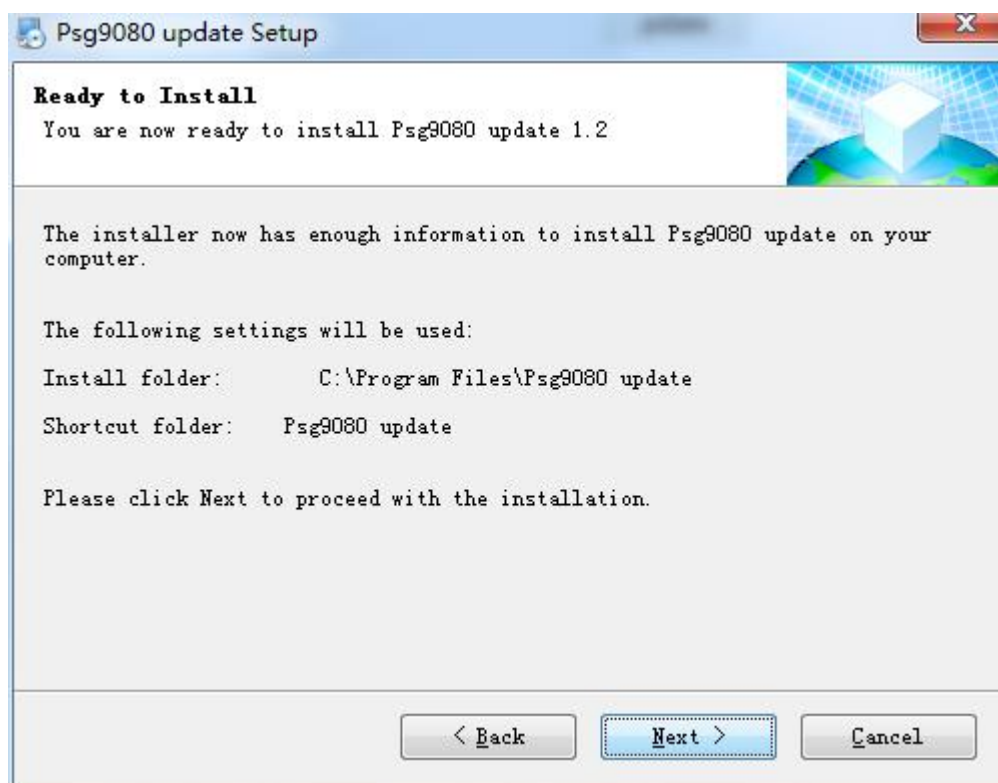
Space required: 313 KB  
Space available on selected drive: 6.96 GB

< Back    Next >    Cancel

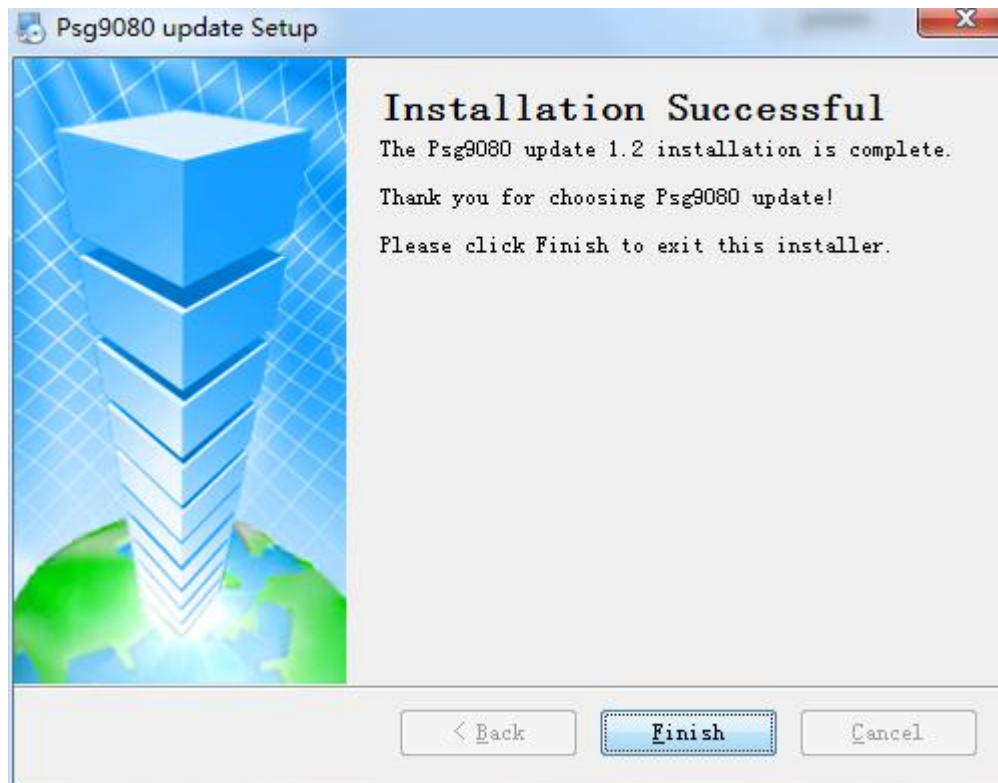
6、Click Next;



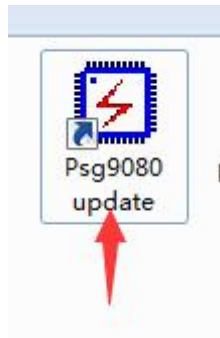
7、Click Next;



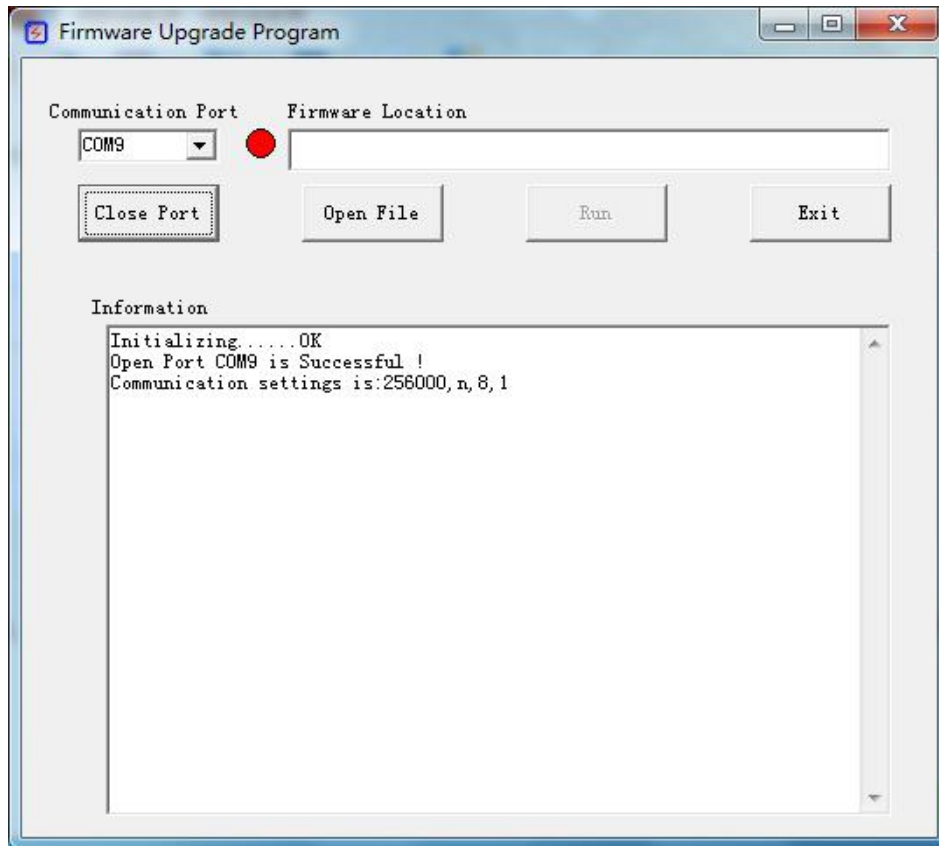
8、Click finish;



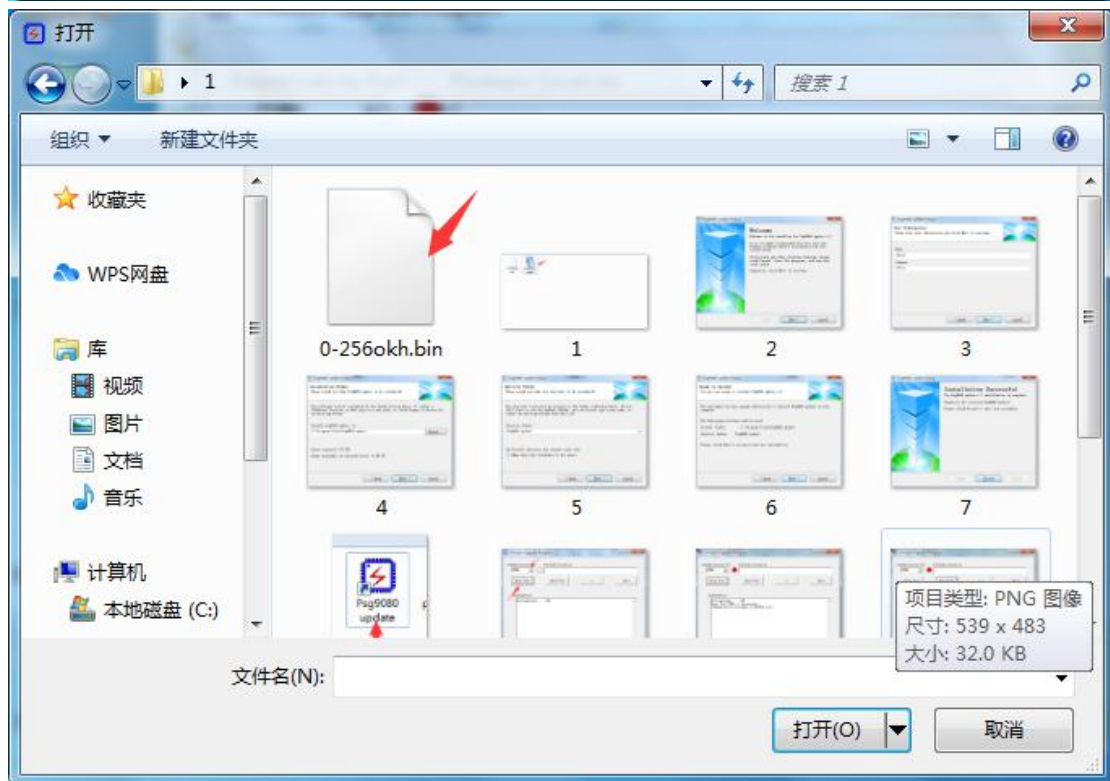
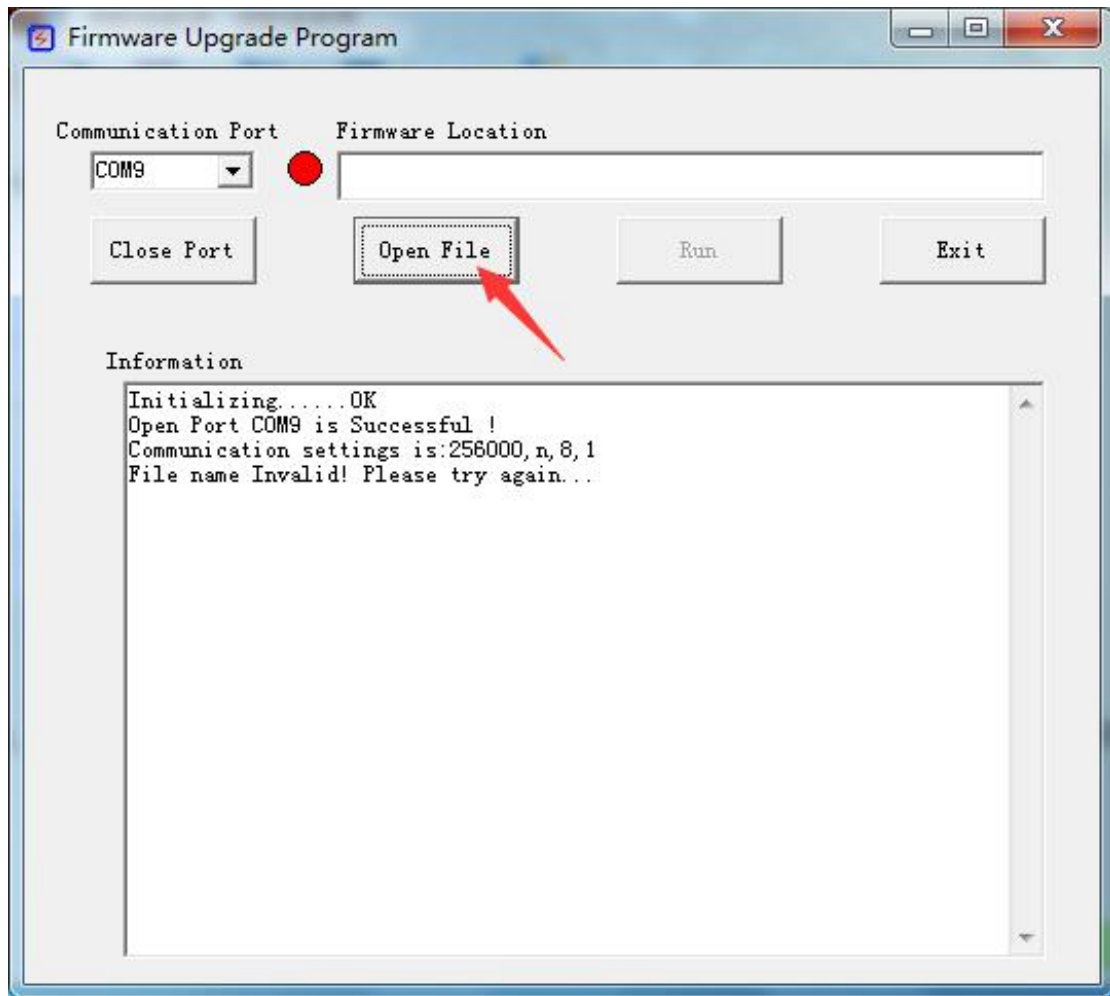
9、Go to the desktop to find the upgrade program, double-click to open the software;



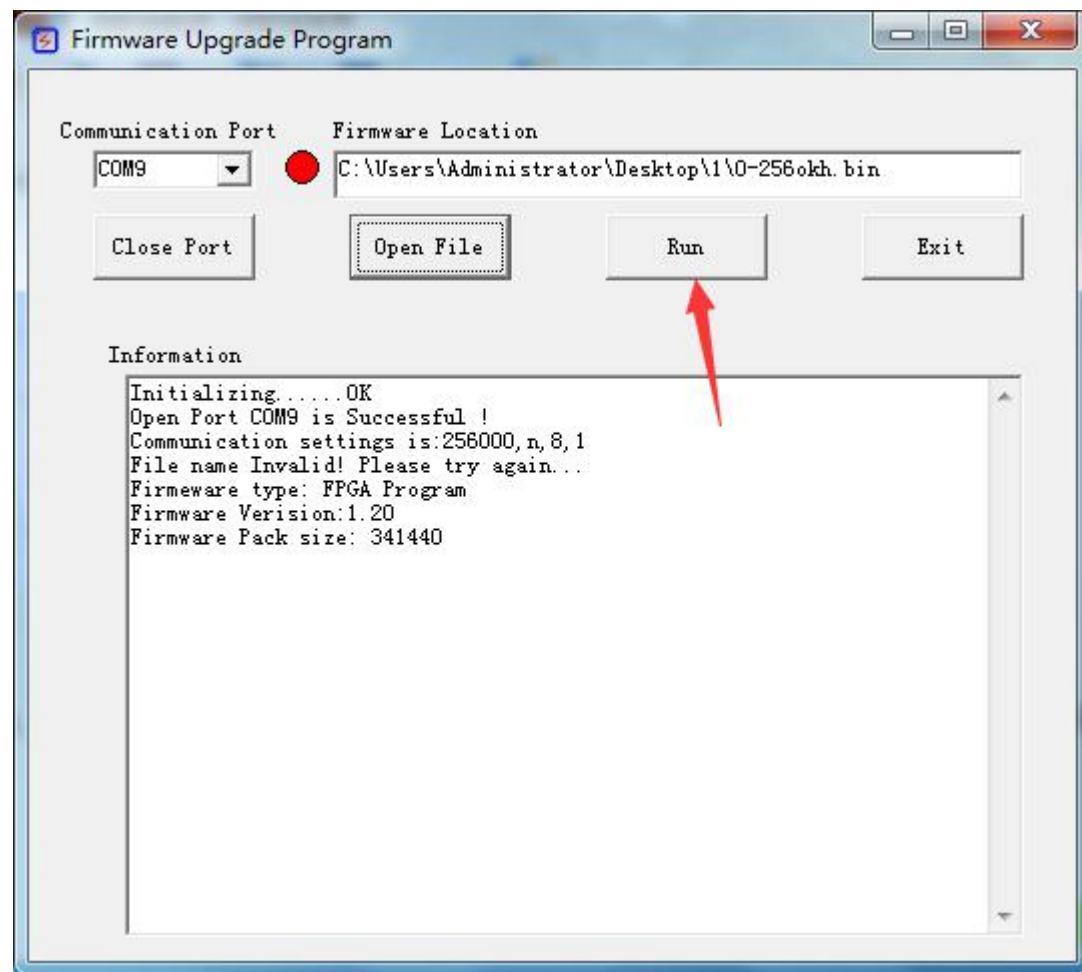
10、 First check the corresponding COM port in Computer-Properties-Device Manager, then select the correct COM port in the upgrade software, click OPEN Port



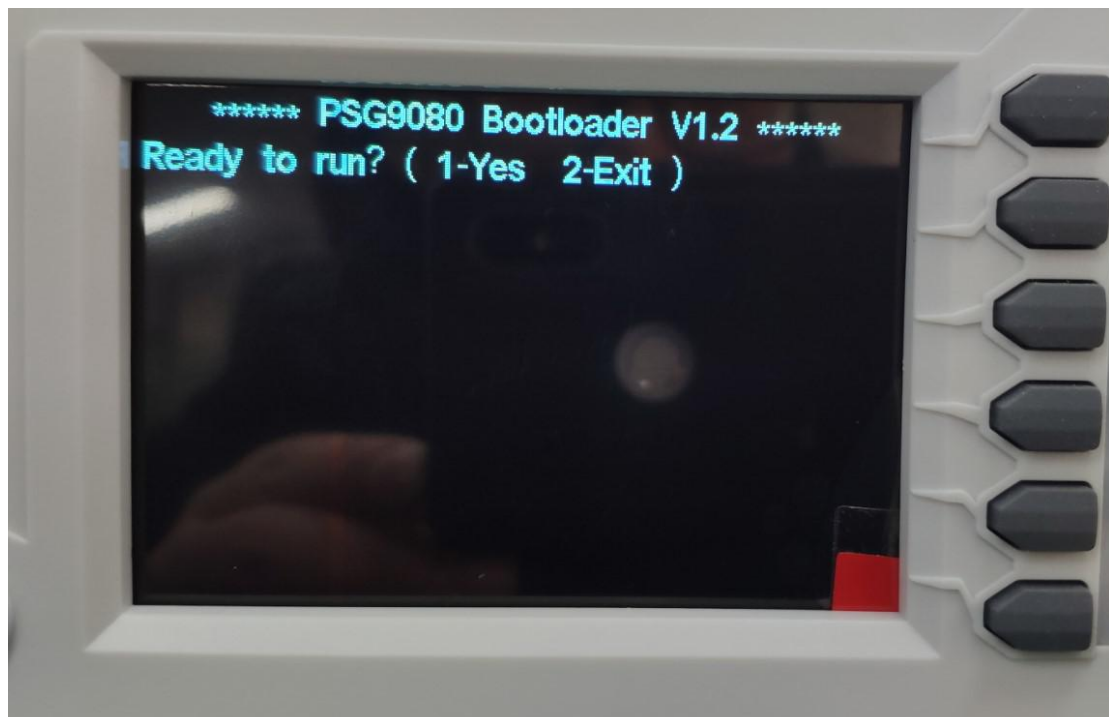
11、 Click Open File to select the new firmware



12、Click RUN

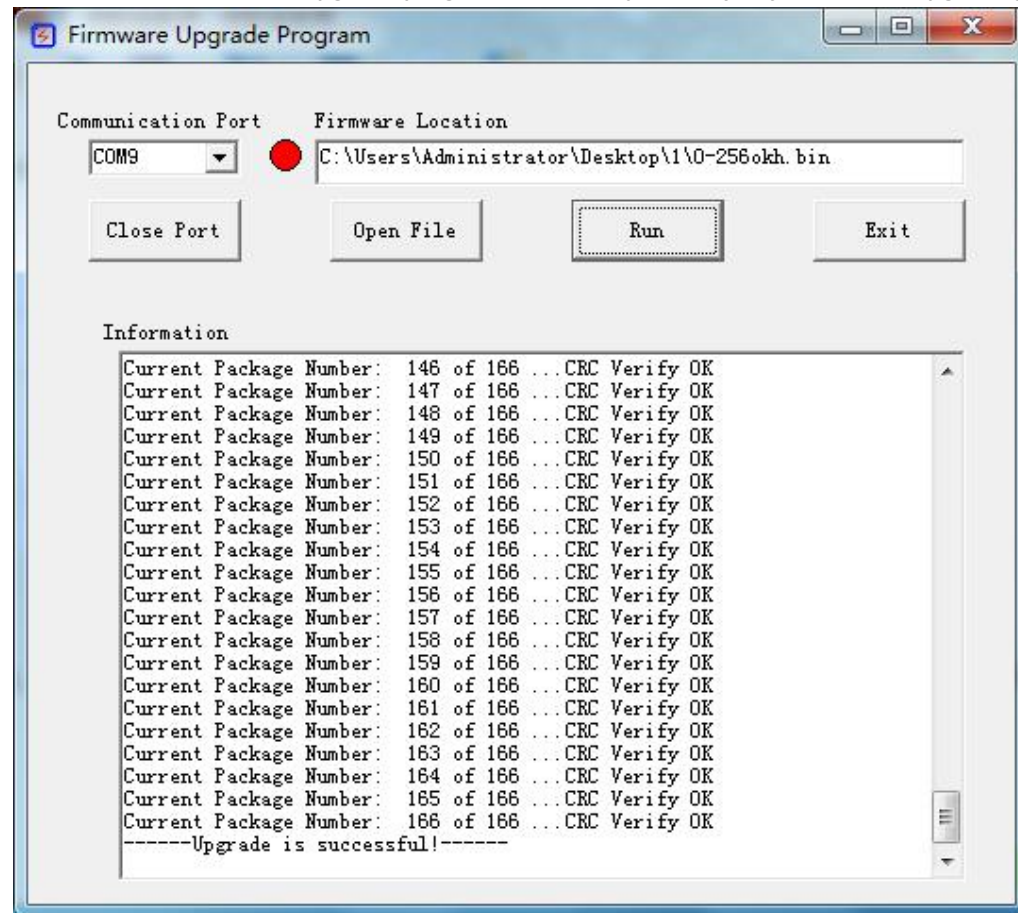


The display of PSG9080 is shown as below, and no operation is required on PSG9080 at this time.





13、Click Exit to exit the upgrade program, PSG9080 press any key to exit the upgrade program;



Press any key in PSG9080 to exit the upgrade program

